

PARTNERING WITH ADI ISLET CORE TO

Maximize the Gift of Pancreas Donation



THE NEED

Diabetes affects over 2 million people in Canada alone. Human pancreatic islets are the gold standard for transplantation and cure-focused research.

THE SOLUTION

Our Mission: To isolate, distribute, and biobank pancreatic islets from donor organs not matchable for clinical transplantation to support diabetes and transplant research globally.

Our Goal: To ensure that every donated pancreas has the opportunity to contribute to life-changing diabetes research.

RESEARCH ISN'T A "PLAN B;" IT'S A VITAL PATH TO SAVING LIVES.

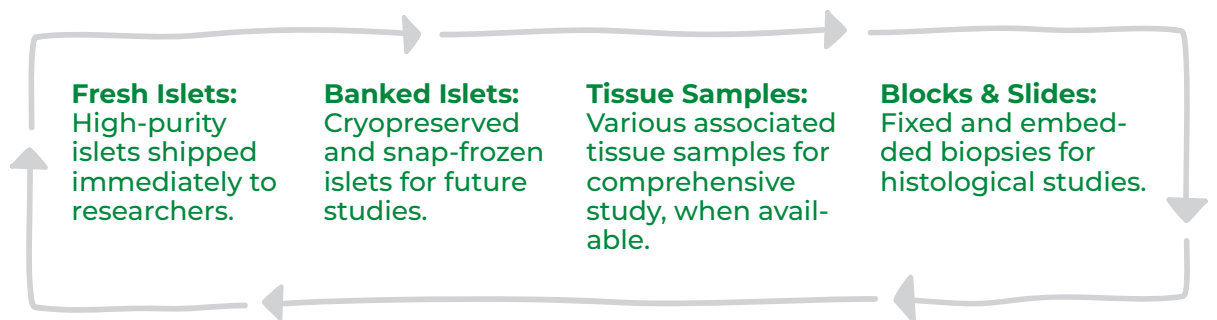


WE ACCEPT DONORS THAT OTHERS MAY DECLINE

Our research-only focus allows us to accept a broad range of organ donors:

- **Donors with Diabetes:** We actively seek donors with Type 1 and Type 2 Diabetes.
- **All Ages:** We process donors of all ages (8 weeks to 84 years old).
- **Any BMI:** We accept donors of any body mass index.
- **Medical History:** We can utilize organs with histories that preclude clinical use, but are valuable for science.

NOTHING GOES TO WASTE

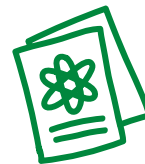


A DONATION WITH IMPACT

We provide research results back to the community via [HumanIslets.com](https://www.humanislets.com), ensuring transparency and maximal utilization of each donation's experimental findings.



Supporting research groups across 4 continents



Hundreds of scientific papers have been published



Millions of islets are shared to benefit research